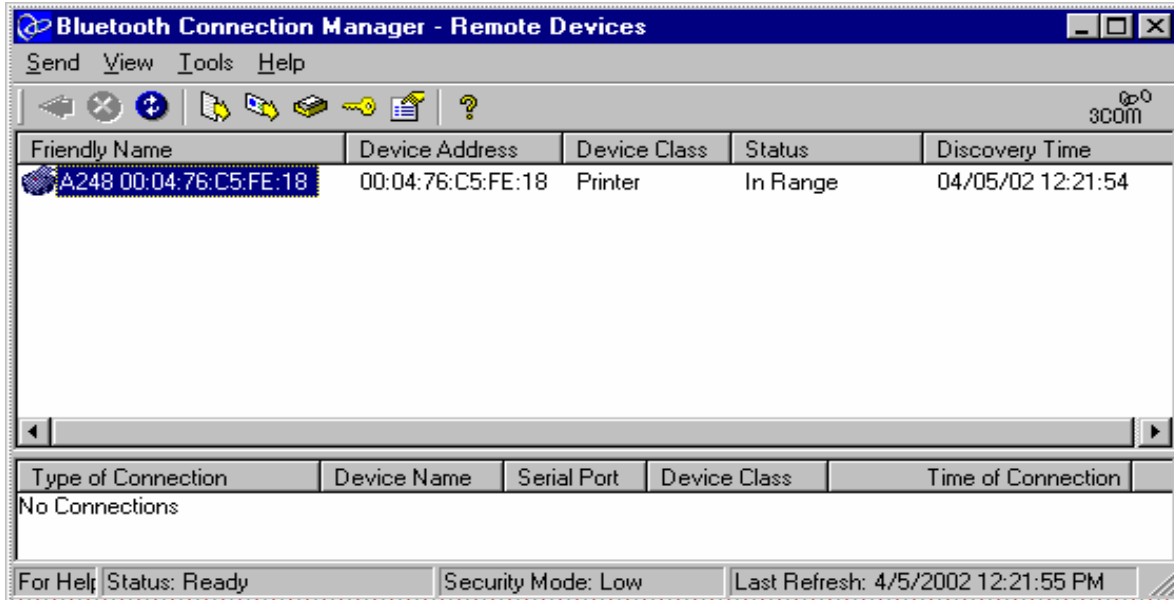


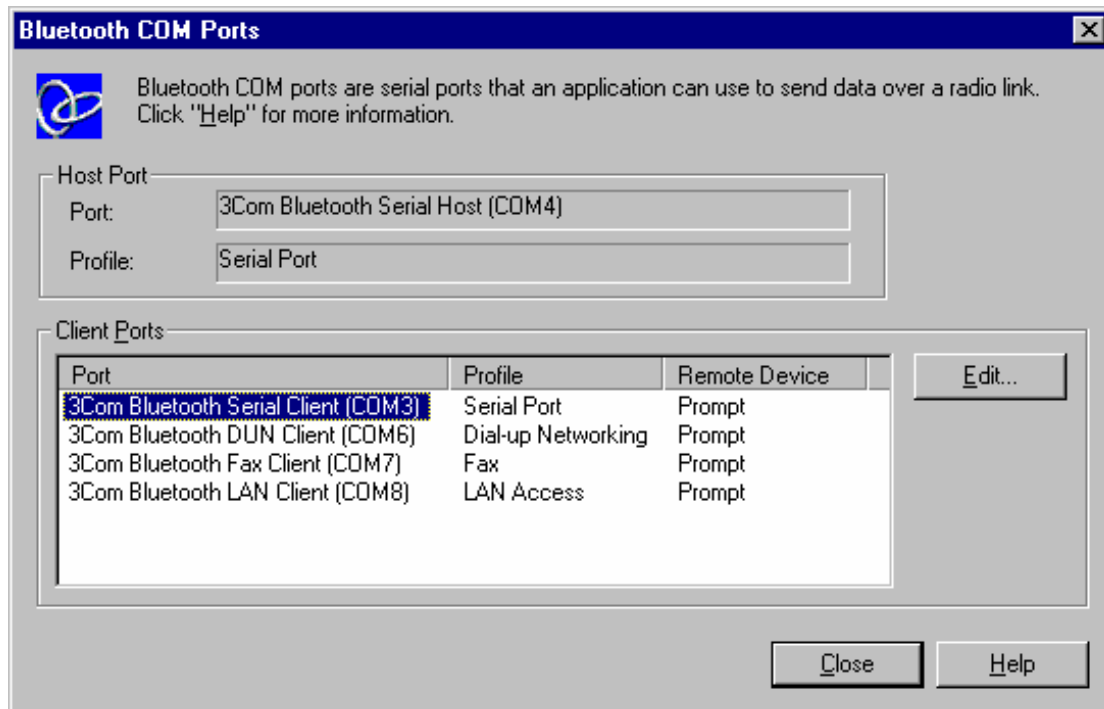
## Bluetooth™ Installation Procedure

Launch the 3Com Bluetooth Connection Manager to search for Bluetooth devices (Printers).

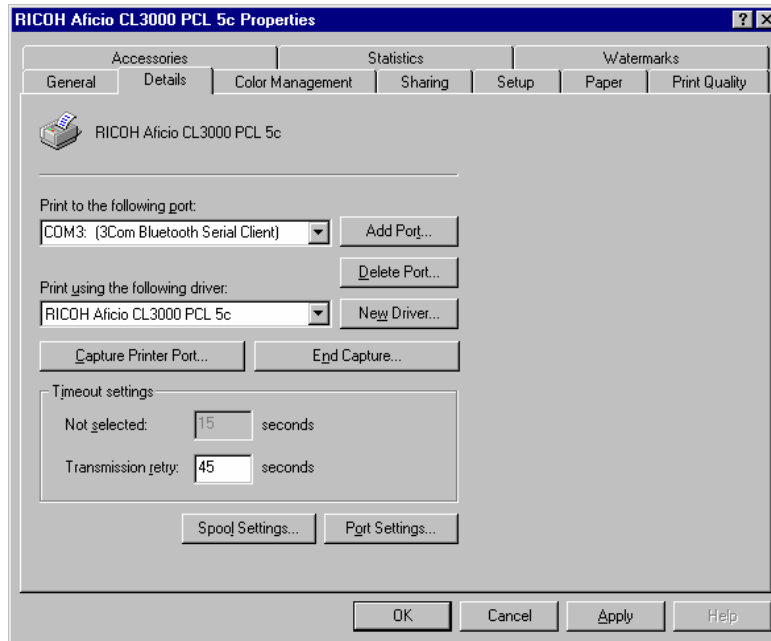


Searched device assign to the COM3 port as 3Com Bluetooth Serial Client.

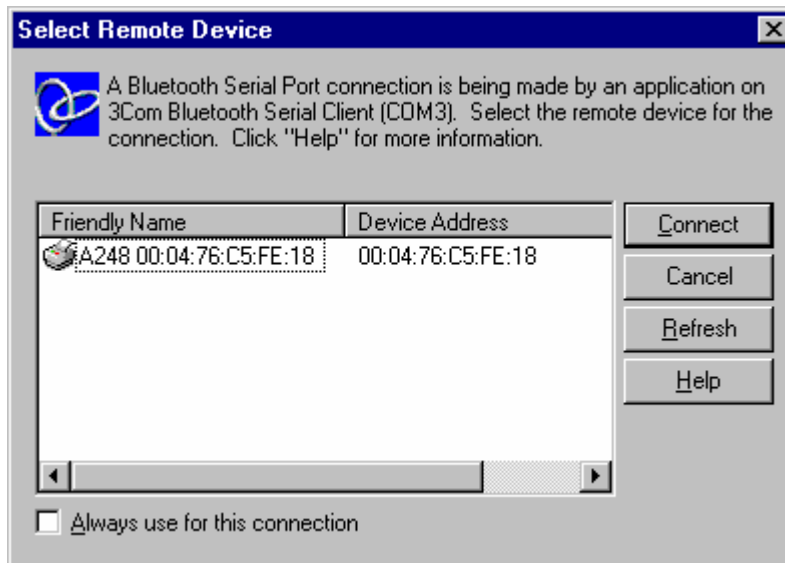
- Select "COM port.." from the Tool menu.



Install the printer driver, and assign it to the COM3 port which has been assigned 3Com Bluetooth Serial Client.



When printing is started from any application, this screen appears. Select the printer added to the Bluetooth device list as follows;



The Bluetooth connection can be checked in 3Com Bluetooth Connection Manager.

